

AGILE and CS 80 MAGNEO

**Interior sliding doors.
Manual or automatic
motion.**



Manual sliding door AGILE 150 as double-panel version
– installed here on the bedroom side of the hotel room.



“Whenever we have our hands full,
automatic doors make life easier.”

The CS 80 MAGNEO automatic sliding door operator
moves the timber door of the conference room.

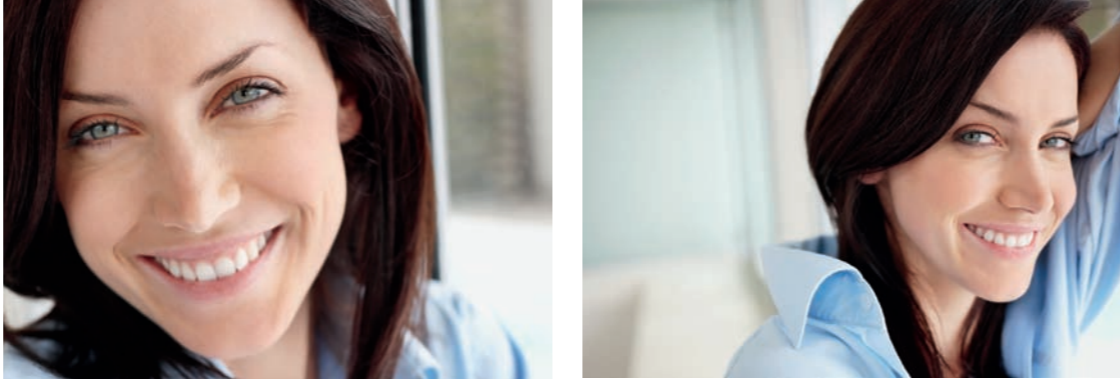


AGILE and CS 80 MAGNEO.
Manual and automatic sliding doors.
Convenient and space-saving interior solutions.

DORMA sliding doors are more than just space-saving solutions for areas where space is tight – they improve user convenience and set timeless design styles. Customers may choose between the AGILE sliding door system for manually-operated doors and the automatic version

CS 80 MAGNEO. Both versions are of similar shape and offer matching surface finishes in simulated stainless steel. DORMA's sliding door portfolio provides individual solutions in premium quality to meet the demands of sophisticated room concepts – which are suitable

for professional environments such as offices, clinical practices or law firms but also for private homes.



“To me, automatic systems stand for greater ease of movement and a touch of luxury.”

NEW: DORMA matt stainless steel design
The CS 80 MAGNEO in DORMA matt stainless steel design matches the stainless steel look of the AGILE (see picture at the very bottom of this page).



NEW: Locking function
The automatic sliding door operator CS 80 MAGNEO now provides a locking function with key switch control in order to prevent unauthorised access. Its locking system is concealed behind the cover.

CS 80 MAGNEO with locking device in DORMA matt stainless steel design.

NEW: CS 80 MAGNEO, now with locking function and in DORMA matt stainless steel design.

Apart from the existing aluminium surface finish, the automatic sliding door operator CS 80 MAGNEO is now also available in DORMA matt stainless steel design. Its clear look matches the stainless steel finish of the manual sliding door operator AGILE and underlines sophis-

ticated and modern interior designs. In addition, DORMA offers MANET single-point fixings and a recessed door grip in matt stainless steel design. A new locking function with key switch control (for locking/unlocking purposes) protects the room from un-

authorised access. The system's locking device is concealed behind the cover and therefore is not visible from the outside.



Automatic door solutions are almost indispensable when hygiene comes into play.”

Especially suitable whenever doors need to be operated without direct contact, for example in medical areas: CS 80 MAGNEO automatic sliding door controlled by a proximity-type switch (Magic Switch).

Transparent and luxurious design: Full-glass solution with manually-operated AGILE sliding door system.



DORMA AGILE and CS 80 MAGNEO.
Slender profiles for professional environments.

DORMA's AGILE and CS 80 MAGNEO sliding door solutions underline the prestigious room concepts of law firms, clinical practices, offices, showrooms, hotels and restaurants. Thanks to their intelligent functional range and harmonious design, they

unite technology with aesthetic considerations. Furthermore these solutions bring user convenience to a new level: In conjunction with a radar motion detector, they allow contactless passage through CS 80 MAGNEO automatic sliding doors – which is espe-

cially suitable for doors installed between the kitchen and the restaurant or in sanitary areas.



“Our automatic door always gives way to our son in his push car.”

Manual sliding door solution: AGILE 150 DORMOTION.
Spring cushion for a smooth closing cycle to the end position.

Concealed mounting: The CS 80 MAGNEO moves doors automatically – here activated via motion detector.



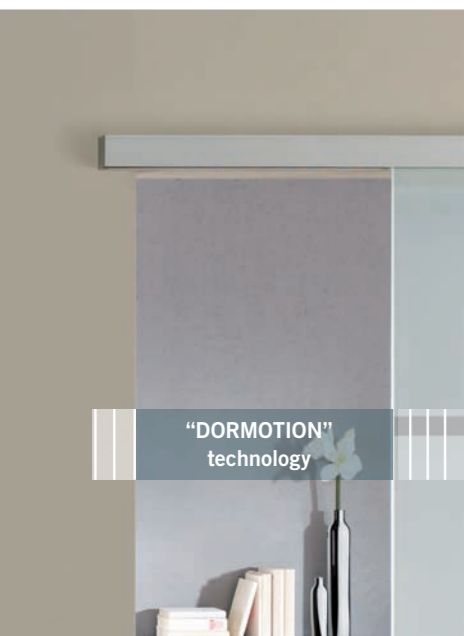
**Living becomes lifestyle.
With AGILE and CS 80 MAGNEO.**

DORMA sliding doors show that living comfort and functionality can easily go together. No matter if between bath and bedroom, kitchen and dining room or living room and dining room – AGILE and CS 80 MAGNEO create smooth transitions. Their slender profiles set interesting visual styles or may be concealed almost invisibly behind the wall or inside the door frame.

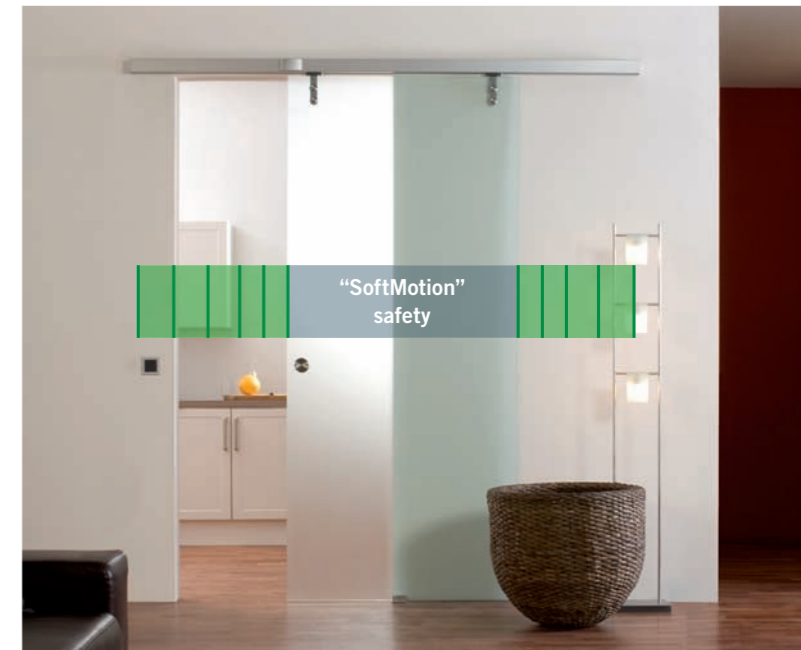
“SoftMotion” safety in “Low-Energy Mode”
CS 80 MAGNEO, reassuringly safe: The automatic function softly stops the door as soon as the panel encounters resistance. Thanks to this feature, usually no additional safety sensors are required when the system operates in Low-Energy Mode. Convenience and freedom for your home.

AGILE – the fitting for manually-operated interior sliding doors.

CS 80 MAGNEO – the operator for automatic interior sliding doors.



Field of application	Extremely versatile: for interior doors in public and commercial buildings and private homes including bathroom doors.	Extremely versatile: for interior doors in public and commercial buildings and private homes.
	Suitable for glass and wooden doors	Suitable for glass, timber and metal doors
	For single- or double-panel door systems	For single-panel door systems
Door-panel weight	AGILE 50 for overall weights of up to 50 kg AGILE 150 for overall weights of up to 150 kg see technical brochure for further details	For overall weights of up to 80 kg
Technical data	DORMOTION-technology: A smooth closing cycle to the end position thanks to spring cushioning.	Magnetic technology with "Low-Energy Mode": Usually, the system does not require additional safety sensors to DIN 18650, ANSI and BSI thanks to the door panel's sensitive driving behaviour in Low-Energy Mode.
	Syncro technology: As soon as a user moves one of the panels of a double-panel door system, the second door panel is activated/in unison.	
	Standard: decelerated stop and safe stop in end position	NEW: Locking function
Dimensions	AGILE 50: height 49 mm x depth 46 mm AGILE 150: height 63 mm x depth 54 mm to 83 mm (dependant on method of mounting) Opening widths depend on system.	Height 62 mm or 75 mm, depth 60 mm Opening widths from 665 mm to 1,125 mm and 3 operator lengths
Design	DORMA Contur Design	DORMA Contur Design
Surface finishes	Various surface finishes: anodised or powder-coated in any anodised or RAL-colour.	Available in aluminium and NEW: DORMA matt stainless steel design (to match the AGILE in simulated stainless-steel)
Operation	By pushing the door manually	Activation of automatic function via pushbutton, proximity-type switch (MagicSwitch), motion detector, remote control or coded transponder (AutoSwitch). Also suitable for manual activation via Push&Go function (a slight push against the door panel is enough).
Mounting	Ceiling- or wall-mounting	Ceiling- or wall-mounting – visible or concealed.
	Mounting at fanlights of full-glass systems	Mounting at fanlights of full-glass systems
	Easy mounting, rugged design, long product lifecycle	Easing mounting and commissioning thanks to Plug&Go (230 V standard power supply). Reliable, low-wear and easy to upgrade.



CS 80 MAGNEO with „Low-Energy Mode“:
The door will stop and reverse upon light contact.

Visit www.dorma.com for further automatic sliding door solutions in various fields of application.

Visit www.dorma.com for further manually-operated sliding door fittings for interior doors.



WN 053 505 51532, GB, x, xx, 11/11

DORMA GmbH + Co. KG
DORMA Platz 1
D-58256 Ennepetal
Phone +49 2333 793-0
Fax +49 2333 793-4950
www.dorma.com