

## CONCEALED FLOOR SPRING for Glass & Wooden Doors



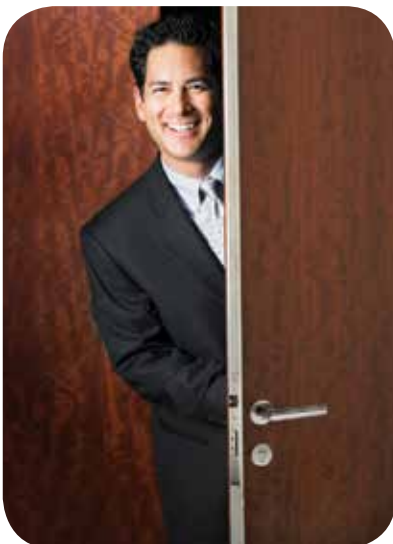
# “ INNOVATION for total vision™ ”

**Ozone** is a leading and established brand offering high quality Architectural Hardware and Safety Solutions worldwide. Ozone has achieved many accolades to its credit by serving countless prestigious projects world over with its innovative, technologically advanced and quality products. Operating on a world wide platform with prestigious business associates, we offer superior product solutions which meet global standards and best practices. Ozone offers complete Architectural Hardware Solutions through more than 3000 products, and a capacity to innovate new products for its customers.



**Door control devices** have been the back bone of Ozone and its customers. These devices have been functioning efficiently for over a decade with minimal failures & high performance.

The manufacturing process employ shigh-precision CNC computer-controlled robotics, combined with automation and technical know-how under a strict quality check system. These products conform to International Standards of fire and safety and also meet ISO 9001 & British BSI standards for its quality management systems.



**Concealed floor spring** is Ozone's latest and most innovative offering till date. After a successul launch of Ozone Plus for Glass doors. This revolutionary fitting is a Bottom Floor Hinge which can be incorporated inside the door frame on the bottom and has an in-built hydraulic system. Therefore the fitting does not require any floor spring to move the door and omits the requirement of a preset (cut required for mounting a floor spring) on the floor. This makes the door installation very easy and also makes possible a clean seamless floor and door way.

Ozone is now launching an innovative Concealed Floor Spring for Wooden doors and new models for Bigger & Heavier Glass doors.

Ozone Plus is complaint as per EN 1154 European Standards and is tested for long life and remarkable performance.



## HEAVY DUTY CONCEALED FLOOR SPRING

### HEAVY DUTY CONCEALED FLOOR SPRING FOR GLASS DOORS

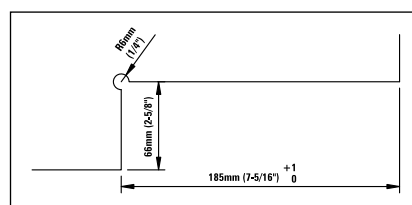
#### OCFH-P-5

##### Product Specification

- Suitable door weight: Max 100kg. (220 Lbs)
- Suitable door width: Upto 1250mm (49")
- Suitable door thickness: 10~15mm (3/8" - 19/32")
- Stainless Steel 316 grade covers & base plate
- Spring size power #5 for internal & external doors
- No floor cutting/digging
- Available in hold open or no hold open option
- High quality mounting screws for different floorings
- No need to have the pre-set on the floor
- Easy installation with base seat adjustable  
±3mm (1/8") backward and forward  
±3mm (1/8") left and right and 4° alignment adjustment



#### Glass Cutout



Finishes available:



SSS



PSS

## CONCEALED FLOOR SPRING FOR GLASS DOORS

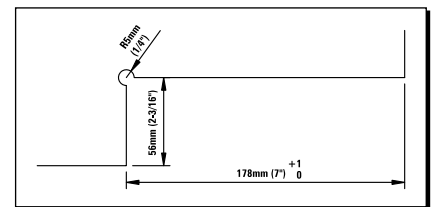
### OCFH-100

#### Product Specification

- Suitable door weight: Max 100kg. (220 Lbs)
- Suitable door width: 750~1000mm (29"-40")
- Suitable door thickness: 8~13mm (5/16"- 1/2")
- Ambient temperature: 20°C~ +50°C
- Compliant as per **EN1154** European Standards
- Hold open 90° (Non Hold Open also available)
- No need to have the pre-set on the floor
- Easy installation with base seat adjustable  
±3mm (1/8") backward and forward  
±3mm (1/8") left and right and 4° alignment adjustment



#### Glass Cutout



#### Finishes available:

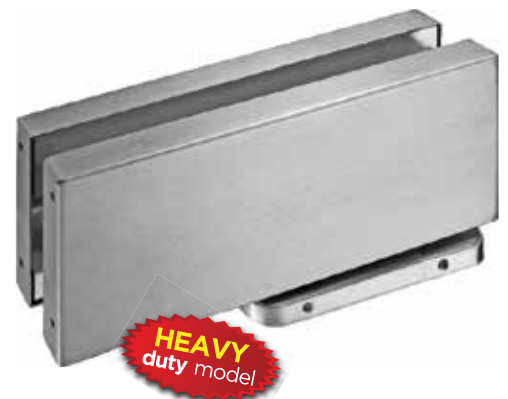


## CONCEALED FLOOR SPRING FOR GLASS DOORS

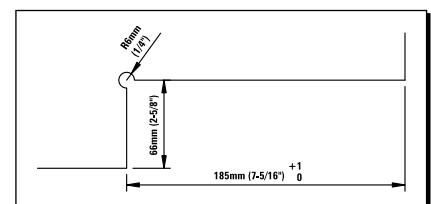
### OCFH-105

#### Product Specification

- Suitable door weight: Max 100kg. (220 Lbs)
- Suitable door width: 750~1250mm (29"-49")
- Suitable door thickness: 10~15mm (3/8" - 19/32")
- Ambient temperature: 20°C~ +50°C
- Hold open 90° (Non Hold Open also available)
- No need to have the pre-set on the floor
- Easy installation with base seat adjustable  
±3mm (1/8") backward and forward  
±3mm (1/8") left and right and 4° alignment adjustment



#### Glass Cutout



#### Finishes available:





## POWER ADJUSTABLE CONCEALED FLOOR SPRING FOR GLASS DOORS

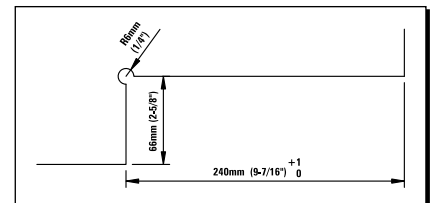
### OCFH-135

#### Product Specification

- Suitable door weight: Max 100kg. (220 Lbs)
- Suitable door width: 750~1250mm (29"-49")
- Suitable door thickness: 8~15mm (5/16" - 19/32")
- Ambient temperature: 20°C~ +50°C
- Hold open 90° (Non Hold Open also available)
- No need to have the pre-set on the floor
- Easy installation with base seat adjustable  
±3mm (1/8") backward and forward  
±3mm (1/8") left and right and 4° alignment adjustment



#### Glass Cutout



Finishes available:



SSS



PSS



GOLD



BLACK  
MATTE



SATIN  
ANODISED

### DATA AND FEATURES

Item No.		OCFH-100	OCFH-105	OCFH-135
Max. door width		750 ~ 1000mm (29"-40")	1250 mm (49")	1250 mm (49")
Max. door weight		≤100kg (220 Lbs)	≤100kg (220 Lbs)	≤100kg (220 Lbs)
Body dimensions (mm)	Length	186mm (7-5/16")	192mm (7-9/16")	210.5mm (8-9/32")
	Width	68mm (2-11/16")	77mm (3")	77.5mm (3-1/16")
	Thick	36mm (1-7/16")	42mm (1-21/32")	42mm (1-21/32")
Angle of opening		150°	150°	150°
Closing speed adjustable		✓	✓	✓
Braking speed adjustable		✓	✓	✓
Non Handed		✓	✓	✓
Power adjustable				✓

✓ =yes

x=no

### OPF-1 PLUS-100

#### CONNECTS OVER PANEL AND SIDE PANEL WITH PIVOT (SIZE OF OCFH-100)

**Product Specification**

- Variable pivot point of 55 or 65mm
- With SS 304 cover of size of OCFH-100
- Cover secured with small 'L' key
- Pivot pin of 15mm diameter
- Adjustable pivot point 55/65mm



Finishes available:    
SSS PSS

### OPF-2 PLUS-100

#### TOP PATCH WITH BIG COVER (SIZE OF OCFH-100)

**Product Specification**

- Variable pivot point of 55 or 65mm
- With SS 304 cover of size of OCFH-100
- Cover secured with small 'L' key



Finishes available:       
SSS PSS GOLD BLACK MATTE SATIN ANODISED

### OPF-2 PLUS-105

#### TOP PATCH WITH BIG COVER (SIZE OF OCFH-105)

**Product Specification**

- Variable pivot point of 55 or 65mm
- With SS 304 cover of size of OCFH-105
- Cover secured with small 'L' key



Finishes available:       
SSS PSS GOLD BLACK MATTE SATIN ANODISED

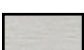

### OPF-2 PLUS-135

#### TOP PATCH WITH BIG COVER (SIZE OF OCFH-135)

**Product Specification**

- Variable pivot point of 55 or 65mm
- With SS 304 cover of size of OCFH-135
- Cover secured with small 'L' key



Finishes available:    
SSS PSS



## CONCEALED FLOOR SPRING FOR WOODEN DOORS

### OCFH-W-100

#### Product Specification

- Suitable door weight: Max 100kg. (220 Lbs)
- Suitable door width: 750~1000mm (29"-40")
- Suitable door thickness: >40mm (1-9/16")
- Angle of opening: 150°
- Quick and easy installation
- Compliant as per **EN1154** European Standards
- Hold open 90° (Non Hold Open also available)
- Bottom plate is of SS 304 grade, SSS & PSS finish



#### **Packing**

Standard packing consists of top pivot set



### DATA AND FEATURES

		Item No.
Max. door width	1000mm (40")	OCFH-W-100
Max. door weight	100Kg (220Lbs)	
Suitable door thickness(mm)		≥ 40 mm (1-9/16")
Body dimensions(mm)	Length	181mm (7-1/8")
	Width	56mm (2-3/16")
	Thick	32mm (1-1/4")
Angle of opening		150°
Closing speed adjustable		✓
Braking speed adjustable		✓
Hold open at 90°		✓
Non-handed		✓

✓ =yes

x=no

○ =option

## Corporate Office



**New Delhi**

H-40, Bali Nagar,  
New Delhi-110 015  
Ph : +91-11-45576677 (30 Lines)  
Fax: +91-11-45576699  
e-mail: [exports@ozonehardware.com](mailto:exports@ozonehardware.com)

## Works

Trilokpur Road, Kheri,  
Nahan District-Sirmour  
Kala Amb  
Himachal Pradesh

[www.ozonehardware.com](http://www.ozonehardware.com) | [exports@ozonehardware.com](mailto:exports@ozonehardware.com)

Architectural  
Glass Fittings



Door Control  
Devices



Railing  
Systems



Urban Street  
Furniture



Home & Institutional  
Safes



**Disclaimer:** Product specifications, information & visuals shown in this catalogue are illustrative in nature, the customers are advised to kindly check technical specifications & details before placing order. Company will not be liable for any such loss to customer/s for technically unsuitable/unfit product. Ozone Overseas reserves the right to change or modify the specifications any time without notice/information. The Company shall only be responsible for defects covered under the product warranty and shall in no way be accountable for any defects (including but not limited to packaging, installation instructions, manuals, specification instructions and care and maintenance instructions), after the delivery of goods to the Customer. All risk and obligations in the goods and products delivered by the Company passes to the Purchaser immediately upon delivery to the Purchaser.